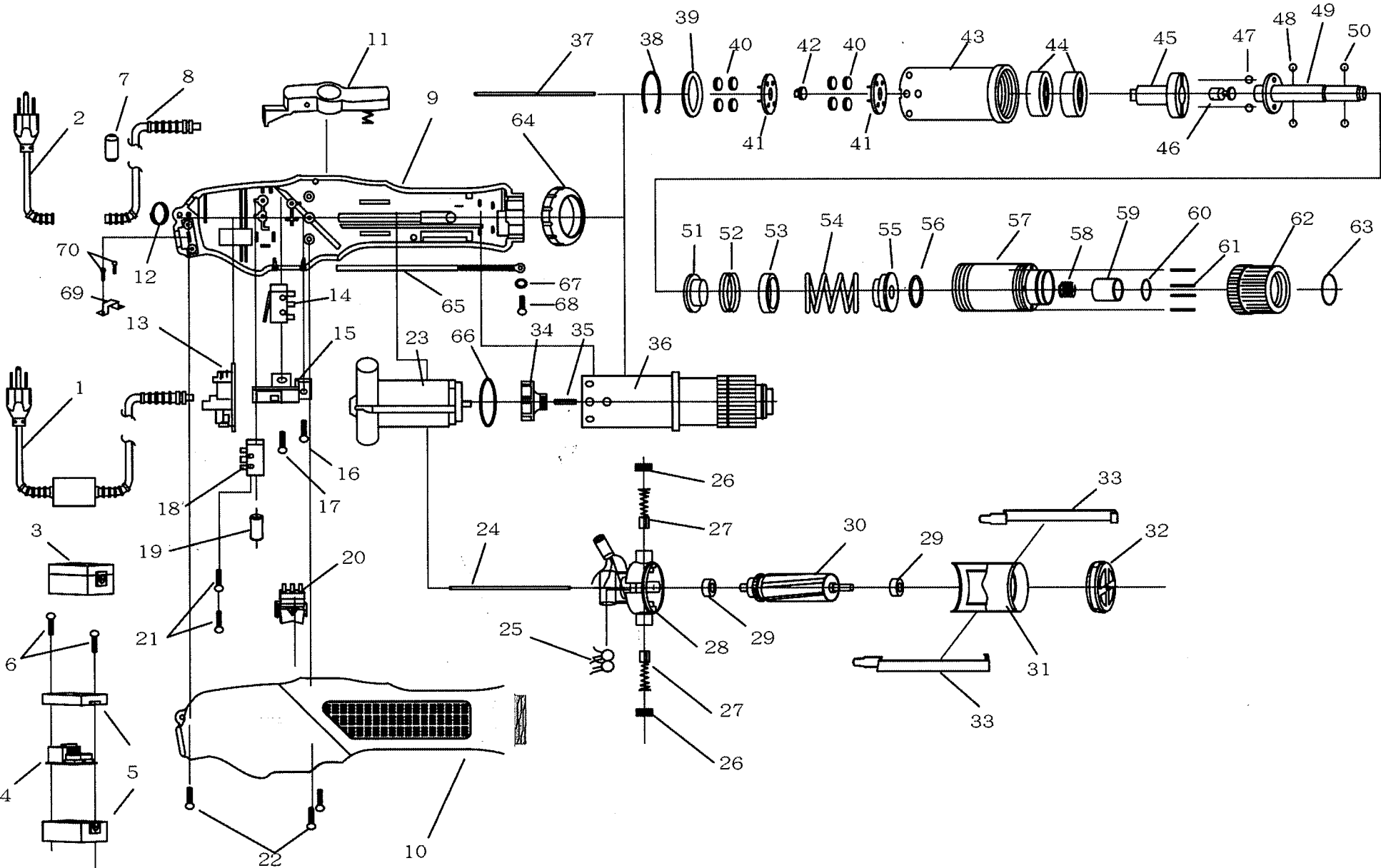


ED-212L1(2), 219L1(2) AUTO SHUT-OFF, AC110V(220V) LEVER-START ELECTRIC SCREWDRIVER(DIRECT PLUG IN)



ED-212L1(2), 219L1(2) AUTO SHUT-OFF, AC110V(220V) LEVER-START ELECTRIC SCREWDRIVER(DIRECT PLUG IN)

PARTS LIST

No.	Parts No.	Description	Q'ty
1	EPAC30001-1	Cord Assembly-America Plug	1
	EPAF30001-1	Cord Assembly-Europe Plug	1
	EPAG30001-1	Cord Assembly-British Plug	1
	EPAJ30001-1	Cord Assembly-India Plug	1
	EPAD30001-1	Cord Assembly-Australia Plug	1
2	EPAA30007-1	Cord 1ft With America Plug	1
	EPAA30007-2	Cord 1ft With Europe Plug	1
	EPAA30007-5	Cord 1ft With British Plug	1
	EPAA30007-5E	Cord 1ft With India Plug	1
	EPAA30007-3	Cord 1ft With Australia Plug	1
3	EPEJ30002-2	Emc-Box Assembly	1
4	EPEG30005-3	P.C.B-Emc	1
5	EPEC30006	Emc-Box Case Only	1
6	EPCH90152-1	Screw	2
7	EPEJ30004	Filter	1
8	EPAA30009-1	Cord 9ft	1
9	EPCB33033	Housing-Underside -Grey/Black	1
10	EPCA33223	Housing-Upside -Grey/Black	1
11	EPCC30011-4	Trigger	1
12	EPCJ20011	Suspension Ring	1
13	EPEG31131F	Control Board -110V	1
	EPEG32132	Control Board -220V	1
14	EPHB91061	Shut Off Switch	1
15	EPCE90101-1	Switch Base	1
16	EPCH90121	Screw	1
17	EPCH90131	Screw	1
18	EPHB30061	Start Switch	1
19	EPE31908	Brake Resistor -110V	1
	EPE31908-4	Brake Resistor -220V	1
20	EPHA91041	Changeover Switch For ED-212L1(2)	1
	EPHA91042	Changeover Switch For ED-219L1(2)	1
21	EPCH90151-1	Screw	2
22	EPCH20102	Screw	3
23	EPMO30111-2	Motor Assembly -110V	1
	EPMO33111-1	Motor Assembly -220V	1
24	EPMI30512-1	Pilot Rod	1
25	EPEB33610-2	Ceramics Capacitor	2
26	EPMD91531-1	Brush Cap	2
27	EPMC21411	Carbon Brush -110V	2
	EPMC20161	Carbon Brush -220V	2
28	EPML33382-1	Motor Top Cover Assembly -110V	1
	EPML33572-1	Motor Top Cover Assembly -220V	1
29	EPME21481	Armature Bearing	2
30	EPMH30601-2	Armature -110V	1
	EPMH33601-1	Armature -220V	1
31	EPMJ33631-1	Motor Yoke Assembly	1
32	EPMB33651-1	Motor End Cover	1
33	EPMA33621-1B	Assembling Spring	2
34	EPMK33091-1	Fan	1
35	EPMG91081	Pilot Rod	1
36	EPGZ30073-2A	Clutch Assembly For ED-212L1(2) Hex. 5mm (Opt.)	1
	EPGZ30073-2B	Clutch Assembly For ED-212L1(2) Hex. 6.35mm	1
	EPGZ30073-2C	Clutch Assembly For ED-212L1(2) 4mm (Opt.)	1
	EPGZ30073-2D	Clutch Assembly For ED-212L1(2) 5mm (Opt.)	1
	EPGZ30073-2AD	Clutch Assembly For ED-212L1(2) Hex. 5mm, 5mm (Opt.)	1
	EPGZ30073-3A	Clutch Assembly For ED-219L1(2) Hex. 5mm (Opt.)	1

No.	Parts No.	Description	Q'ty
36	EPGZ30073-3B	Clutch Assembly For ED-219L1(2) Hex. 6.35mm	1
	EPGZ30073-3C	Clutch Assembly For ED-219L1(2) 4mm (Opt.)	1
	EPGZ30073-3D	Clutch Assembly For ED-219L1(2) 5mm (Opt.)	1
37	EPGZ30073-3AD	Clutch Assembly For ED-219L1(2) Hex. 5mm, 5mm (Opt.)	1
	EPMI30241	Pilot Rod For Hex. 5mm, 4mm, 5mm Type (Opt.)	1
	EPMI30241-1	Pilot Rod For Hex. 6.35mm	1
38	EPGK20231	"C" Ring	1
39	EPGI20251-1	Washer	1
40	EPGH20241-2	Gear, Planet	8
41	EPGG30271	Gear Base	2
42	EPG20105	Central Gear	1
43	EPGA30311-6	Gear Case	1
44	EPGN30321	Main Bearing	2
45	EPGC30341	Cam	1
46	EPGU30361	Stop Pilot	1
47	EPGP30351	Steel Balls 4mm	2
48	EPGP30371	Steel Balls 3.15mm For Hex. 5mm, 4mm, 5mm Type (Opt.)	2
	EPGP30351	Steel Balls 4mm For Hex. 6.35mm	2
49	EPGD30381A	Shaft For Hex. 5mm Type (Opt.)	1
	EPGD30381B	Shaft For Hex. 6.35mm Type	1
	EPGD30381C	Shaft For 4mm Type (Opt.)	1
	EPGD30381D	Shaft For 5mm Type (Opt.)	1
	EPGD30383AD	Shaft For Hex. 5mm, 5mm Type (Opt.)	1
50	EPGP20331	Steel Balls 2mm For Hex. 5mm, 5mm Type (Opt.)	2
	EPGP21291B	Steel Balls 2.5mm For 4mm (Opt.)	2
	EPGP20331B	Steel Balls 2.38mm For Hex. 6.35mm	2
51	EPGF30401	Waring Plate For Hex. 5mm, 4mm, 5mm Type (Opt.)	1
	EPGF30401B	Waring Plate For Hex. 6.35mm Type	1
52	EPGO30541	Spring-ED-212L1(2) Only	1
	EPGO30541-1	Spring-ED-219L1(2) Only	1
53	EPGO30531	Cap Spring	1
54	EPGE50411-1	Waring Spring For ED-212L1(2) Hex. 5mm, 4mm, 5mm Type (Opt.)	1
	EPGE50411-2	Waring Spring For ED-212L1(2) Hex. 6.35mm	1
	EPGE30413-3	Waring Spring For ED-219L1(2) Hex. 5mm, 4mm, 5mm Type (Opt.)	1
	EPGE30411-11	Waring Spring For ED-219L1(2) Hex. 6.35mm	1
55	EPGY30421	Waring Spring Base For Hex. 5mm, 4mm, 5mm Type (Opt.)	1
	EPGY30421B	Waring Spring Base For Hex. 6.35mm Type	1
56	EPGK20231B	"C"-Ring For Hex. 6.35mm	1
57	EPGB30441-12A	Clutch Case For Hex. 5mm, 4mm, 5mm Type (Opt.)	1
	EPGB30441-1A	Clutch Case For Hex. 6.35mm Type	1
58	EPGO20391	Bit Spring For Hex. 5mm, 4mm, 5mm Type (Opt.)	1
	EPGO20391B	Bit Spring For Hex. 6.35mm Type	1
59	EPGJ30461	Bit Sleeve For For Hex. 5mm, 4mm, 5mm Type (Opt.)	1
	EPGJ3046B	Bit Sleeve For Hex. 6.35mm Type	1
60	EPGQ30471	"C" Ring For For Hex. 5mm, 4mm, 5mm Type (Opt.)	1
	EPGQ21361	"C" Ring For Hex. 6.35mm Type	1
61	EPGL30481-1	Torque Adjust Pin	4
62	EPGM30491	Torque Adjust Ring	1
63	EPGS30501	"C" Ring	1
64	EPGD20111-1	Coupler	1
65	EPCH30681T	Grounding Means	1
66	EPMF30101	Insulate Washer	1
67	EPCH20102-10	Washer	1
68	EPCH20102-11	Screw	1
69	EPCH20102-2	Wire Clamp	1
70	EPCH20102-3	Screw For Wire Clamp	2