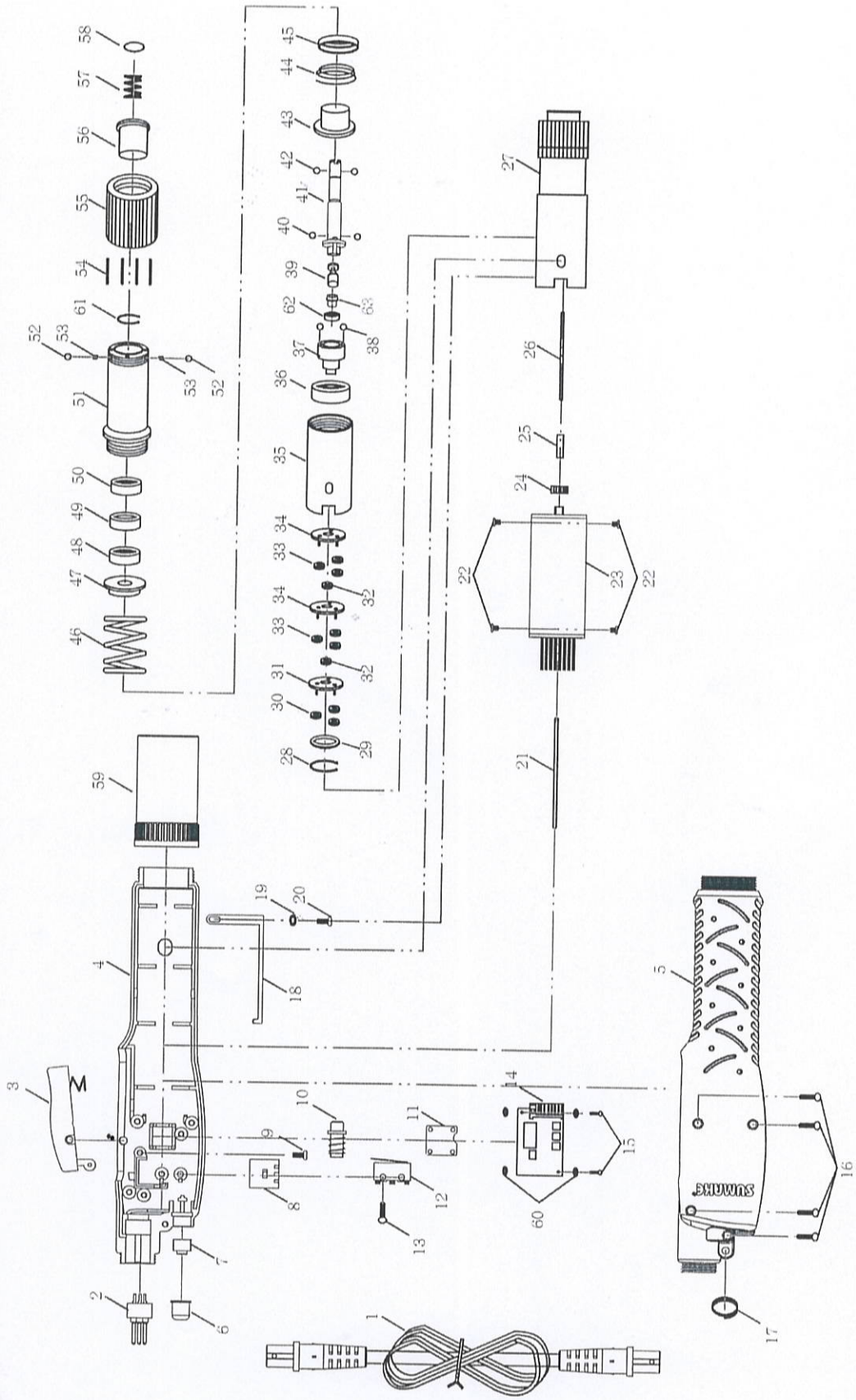


EA-B101(103)L-C/C3 BRUSHLESS FULL AUTO SHUT-OFF DC12V LEVER START, ELECTRIC SCREWDRIVER
 EA-B101(103)LS1-C/C3 BRUSHLESS FULL AUTO SHUT-OFF DC12V LEVER START, LOW SPEED ELECTRIC SCREWDRIVER



EA-B101(3)L(LS1)-C/C3-P-1403C-K2

EA-B101(103)L-C/C3 BRUSHLESS FULL AUTO SHUT-OFF DC12V LEVER START, ELECTRIC SCREWDRIVER
EA-B101(103)LS1-C/C3 BRUSHLESS FULL AUTO SHUT-OFF DC12V LEVER START, LOW SPEED ELECTRIC SCREWDRIVER

PARTS LIST

No.	Parts No.	Description	Q'ty	No.	Parts No.	Description	Q'ty
1	EPA450001-27N	Cord Assembly	1	31	EPGG20260-2	Gear Seat For EA-B101LS1-C/C3, EA-B101LS1-C/C3	1
2	EPPZ50159-6	3 Core Plugs	1	32	EPG20113	Central Gear For EA-B101L-C/C3, EA-B103L-C/C3	1
3	EPC50001	Trigger Assembly	1	33	EPG20113-1	Central Gear For EA-B101LS1-C/C3, EA-B103LS1-C/C3	1
4	EPC993109	Trigger Assembly (ESD)	1	34	EPGH92230-1	Idle Gear For EA-B101L-C/C3, EA-B103L-C/C3	3
5	EPC993109-1	Housing-Underside	1	35	EPGH92230-4	Idle Gear For EA-B101LS1-C/C3, EA-B103LS1-C/C3	3
6	EPC993109-1	Housing-Underside (ESD)	1	36	EPGG20260-1	Gear Seat For EA-B101L-C/C3, EA-B103L-C/C3	1
7	EPC993109	Housing-Underside (ESD)	1	37	EPGG20260-2	Gear Seat For EA-B101LS1-C/C3, EA-B103LS1-C/C3	1
8	EPC993109-1	Housing-Underside (ESD)	1	38	EPGA28231-7	Gear Case	1
9	EPC28028-5	Switch Button (Black) For EA-B101L-C/C3, EA-B101LS1-C/C3	1	39	EPGN30431	Main Bearing	1
10	EPC28028-6	Switch Button (Orange) For EA-B103L-C/C3, EA-B103LS1-C/C3	1	40	EPGC20300-2	Shaft Guide For EA-B101L-C/C3, EA-B101LS1-C/C3	1
11	EPH10207	Touches The Switch	1	41	EPGC20300	Shaft Guide For EA-B103L-C/C3, EA-B103LS1-C/C3	1
12	EPEG31420-1	PCB - Start	1	42	EPGP30371	Steel Balls $\phi 3$	2
13	EPEH30201	Screw	1	43	EPGU30373	Stop Pilot	1
14	EPEE50153	Push Rod	1	44	EPGP21291B	Steel Balls $\phi 2.5$	2
15	EPEE80002	Fixture	1	45	EPGD20320-1	Shaft	1
16	EPH10209-1	Shut Off Switch	1	46	EPGP28331	Steel Balls $\phi 1.5$	2
17	EPEH20511	Screw	1	47	EPGF20340	Waring Plate	1
18	EPEG31423-2	PCB	1	48	EPGO30540	Spring For EA-B101L-C/C3, EA-B101LS1-C/C3	1
19	EPEH90154	Screw For PCB	2	49	EPGO30530	Spring Cover For EA-B101L-C/C3, EA-B101LS1-C/C3	1
20	EPEH20511	Screw For Housing	4	50	EPGE20340	Waring Spring For EA-B101L-C/C3, EA-B101LS1-C/C3	1
21	EPCJ20011	Suspension Ring	1	51	EPGE20340-1	Waring Spring For EA-B103L-C/C3, EA-B103LS1-C/C3	1
22	EPEH30678C	Earth The Sheet Copper	1	52	EPGY21320	Waring Spring Seat	1
23	EPEH20102-18	Washer	1	53	EPGN21250	Ball Bearing	1
24	EPEH30192	Screw	1	54	EPGW21530	Spacer For Hex	1
25	EPMI30511-9	Pilot Rod	1	55	EPGN21250	Ball Bearing	1
26	EPEH20102-24	Screw For Motor	4	56	EPG20200	Clutch Case	1
27	EPMO10001CE	Motor Assembly For EA-B101L-C/C3, EA-B103L-C/C3	1	57	EPGP20331K	Steel Balls $\phi 2$	2
28	EPMO10003CE	Motor Assembly For EA-B101LS1-C/C3, EA-B103LS1-C/C3	1	58	EPG090343	Spring	2
29	EPMT1325	Gear	1	59	EPGL28381	Torque Adjusting Plins	4
30	EPMG30081-2	Pilot Rod	1	60	EPGM20430	Torque Adjusting Ring	1
31	EPMI30511-5	Pilot Rod	1	61	EPGJ30473	Bit Sleeve	1
32	EPGZ28114-6C	Clutch Assembly For EA-B101L-C/C3	1	62	EPG020390-1	Bit Spring	1
33	EPGZ28114-7C	Clutch Assembly For EA-B103L-C/C3	1	63	EPGQ21360	C-Ring	1
34	EPGZ28114-8C	Clutch Assembly For EA-B101LS1-C/C3	1	64	EPKC-9C	Torque Fixed Ring	1
35	EPGZ28114-9C	Clutch Assembly For EA-B103LS1-C/C3	1	65	EPKC-9S	Torque Fixed Ring (ESD)	1
36	EPGK20233	C Ring	1	66	EPP11020-4	Insulating Washer (ESD)	4
37	EPGJ28446	Iron Washer	1	67	EPGK20235	C Ring	1
38	EPGH92230	Idle Gear For EA-B101L-C/C3, EA-B103L-C/C3	3	68	EPGN30437	Ball Bearing	1
39	EPGH92230-3	Idle Gear For EA-B101LS1-C/C3, EA-B103LS1-C/C3	3	69	EPG21204	Center Tip	1
40	EPGG20260	Gear Seat For EA-B101L-C/C3, EA-B103L-C/C3	1				