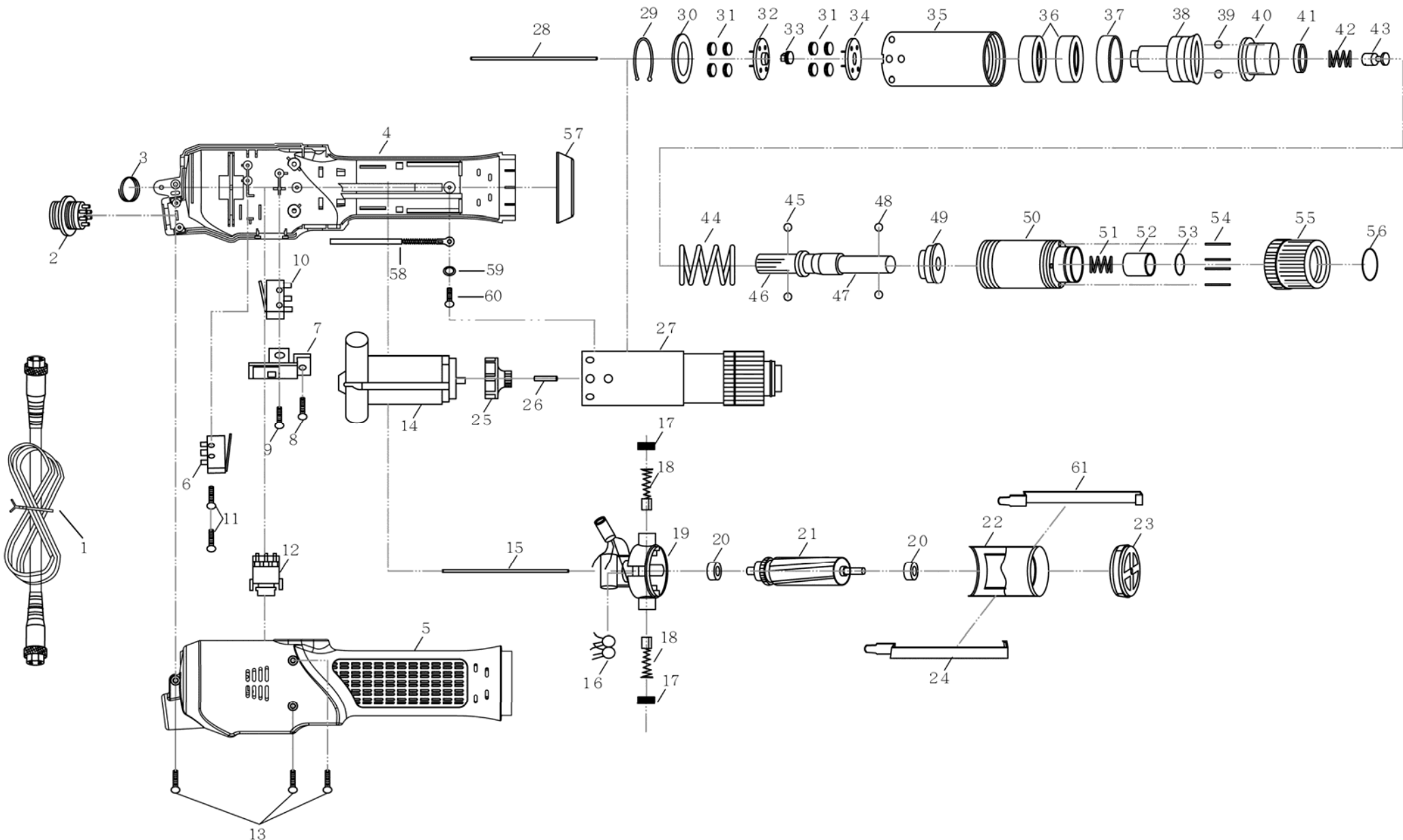


**EA-722(730)(745)P/C6 FULL AUTO SHUT-OFF, DC32V PUSH TO START ELECTRIC SCREWDRIVER (6PIN)**  
**EA-730PH/C6 FULL AUTO SHUT-OFF, DC32V PUSH TO START HIGH SPEED ELECTRIC SCREWDRIVER (6PIN)**



**EA-722(730)(745)P/C6 FULL AUTO SHUT-OFF, DC32V PUSH TO START ELECTRIC SCREWDRIVER (6PIN)**

# EA-730PH/C6 FULL AUTO SHUT-OFF, DC32V PUSH TO START HIGH SPEED ELECTRIC SCREWDRIVER (6PIN)

## PARTS LIST

No.	Parts No.	Description	Q'ty
1	EPAA50001N	Cord Assembly	1
2	EPPZ50160	Connector	1
3	EPCJ20011	Suspension Ring	1
4	EPCB91025	Housing-Underside	1
	EPCB91024	Housing-Underside (ESD)	1
5	EPCA91185	Housing-Upside	1
	EPCA91184	Housing-Upside (ESD)	1
6	EPH10201	Shut Off Switch	1
7	EPCE90101-1	Switch Base	1
8	EPCH90121	Screw	1
9	EPCH90131	Screw	1
10	EPH10201	Start Switch	1
11	EPCH90151-1	Screw	2
12	EPHA91041	Changeover Switch For EA-722P/C6	1
	EPHA91042	Changeover Switch For EA-730P/C6, EA-730PH/C6	2
	EPHA92051	Changeover Switch For EA-745P/C6	3
13	EPCH20102	Screw	3
14	EPMO80081-5	Motor Assembly For EA-722P/C6, EA-730P/C6, EA-745P/C6	1
	EPMO80081-8	Motor Assembly For EA-730PH/C6	1
15	EPMI90481	Pilot Rod	1
16	EPEB33610-2	Ceramics Capacitor	1
17	EPMD91531-2	Brush Cap	2
18	EPMC71411-1	Carbon Brush	2
19	EPML80531-1	Motor Top Cover	1
20	EPME21481	Ball Bearing	2
21	EPMH81581-1	Armature For EA-722P/C6, EA-730P/C6, EA-745P/C6	1
	EPMH81581-3	Armature For EA-730PH/C6	1
22	EPMJ91621PF	Motor Yoke Assembly	1
23	EPMB91641A	Motor End Cover	1
24	EPMA91611B	Assembling Spring	2
25	EPMK21111	Fan For EA-722P/C6	1
	EPMK91091	Fan For EA-730P/C6	1
	EPMK92091	Fan For EA-745P/C6	1
	EPMK21112	Fan For EA-730PH/C6	1
26	EPMG91081	Pilot Rod	1
27	EPGZ81081PA	Clutch Assembly For EA-722P/C6 Hex. 5mm (Opt.)	1
	EPGZ81081-6B	Clutch Assembly For EA-722P/C6 Hex. 6.35mm	1
	EPGZ81082PA	Clutch Assembly For EA-730P/C6 Hex. 5mm (Opt.)	1
	EPGZ81082-6B	Clutch Assembly For EA-730P/C6 Hex. 6.35mm	1
	EPGZ81083PA	Clutch Assembly For EA-745P/C6 Hex. 5mm (Opt.)	1
	EPGZ81083-6B	Clutch Assembly For EA-745P/C6 Hex. 6.35mm	1
	EPGZ81082PAF	Clutch Assembly For EA-730PH/C6 Hex. 5mm (Opt.)	1
EPGZ81082-6BF	Clutch Assembly For EA-730PH/C6 Hex. 6.35mm	1	
28	EPMI90201	Pilot Rod	1
29	EPGK91211	"C" Ring	1
30	EPGI28444-1	Iron Washer For EA-722P/C6	1
	EPGI28444	Iron Washer For EA-730P/C6, EA-745P/C6, EA-730PH/C6	1
31	EPGH20241	Idle Gear For EA-722P/C6	6
	EPGH91232	Idle Gear For EA-730P/C6	6
	EPGH92231	Idle Gear For EA-745P/C6	8

No.	Parts No.	Description	Q'ty
31	EPGH21221-2	Idle Gear For EA-730PH/C6	8
32	EPGG21231	Gear Seat For EA-722P/C6	1
	EPGG20271	Gear Seat For EA-730PH/C6	1
	EPGG91242	Gear Seat For EA-730P/C6	1
	EPGG92241	Gear Seat For EA-745P/C6	1
33	EPG20102	Central Gear For EA-722P/C6	1
	EPG20104	Central Gear For EA-730PH/C6	1
34	EPGG21231	Gear Seat For EA-722P/C6	1
	EPGG91272	Gear Seat For EA-730P/C6	1
	EPGG92271	Gear Seat For EA-745P/C6	1
	EPGG20271	Gear Seat For EA-730PH/C6	1
35	EPGA91281	Gear Case For EA-722P/C6	1
	EPGA91282	Gear Case For EA-730P/C6, EA-745P/C6	1
	EPGA91282-1	Gear Case For EA-730PH/C6	1
36	EPGN21251	Main Bearing	2
37	EPGW21532	Iron Ring	1
38	EPGX90302	Shaft Guide	1
39	EPGP30361	Stell Balls	2
40	EPGF90322	Waring Plate	1
41	EPGV90331	Inner Spring Cap	1
42	EPGO90341	Inner Spring	1
43	EPGU30361	Stop Pilot	1
44	EPGE80361-2	Waring Spring For EA-722P/C6	1
	EPGE80361-4	Waring Spring For EA-730P/C6, EA-730PH/C6	1
	EPGE80361-6	Waring Spring For EA-745P/C6	1
45	EPGP30351	Stell Balls	2
46	EPGD91402	Shaft For EA-722P/C6	1
	EPGD91402-1	Shaft For EA-730P/C6, EA-730PH/C6	1
	EPGD91402A	Shaft For EA-745P/C6 Hex. 5mm (Opt.)	1
	EPGD91402B-2	Shaft For EA-745P/C6 Hex. 6.35mm	1
47	EPGT91401C	Bit Holder For EA-722P/C6 Hex. 6.35mm Type	1
	EPGT91401A	Bit Holder For EA-722P/C6 Hex. 5mm Type (Opt.)	1
	EPGT91401C-1	Bit Holder For EA-730P/C6, EA-730PH/C6 Hex. 6.35mm Type	1
	EPGT91401A-1	Bit Holder For EA-730P/C6, EA-730PH/C6 Hex. 5mm Type (Opt.)	1
48	EPGP21291A	Bit Pilot For Hex. 5mm (Opt.)	2
	EPGP21291B	Bit Pilot For Hex. 6.35mm	2
49	EPGY21321	Waring Spring Base	1
50	EPGB21331	Clutch Case	1
51	EPGQ21341	Bit Spring	1
52	EPGJ21351	Bit Sleeve	1
53	EPGQ21361	"C" Ring	1
54	EPGL21371	Torque Adjusting Pins	4
55	EPGM21381	Torque Adjusting Ring	1
56	EPGS21391	"C" Ring	1
57	EPGD91031-1	Coupler	1
	EPGD91031-4	Coupler (ESD)	1
58	EPCH30681-1	Grounding Means	1
59	EPCH20102-10	Washer	1
60	EPCH20102-11	Screw	1